

Conveyor Type Wet Blast Machine

Wide Gun 110mm×2

Full automatic

Conveyor type

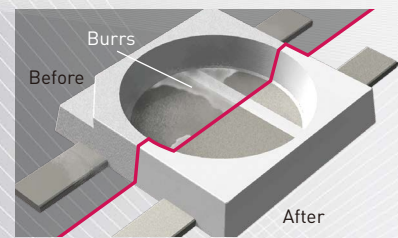
mini PFE 100



Applications

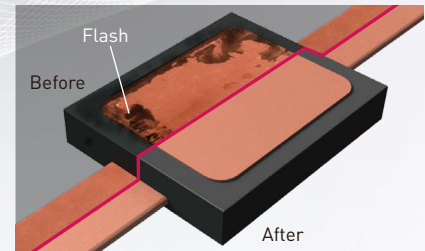
Deburring of LED reflector resin

Striking burrs with resin beads that have light specific gravity without damaging Ag plated surface.



Deflashing on semiconductor package heat sink/lead

Removing flash closely adhered on Cu frame with fine Alumina abrasives.



- Absolutely compact and space-saving
- The uniform process on both sides of work pieces using our unique “Wide gun”.
- The automatic process from Wet Blasting, rinsing to cutwater.

The Wide Gun

Macoho's original nozzle. Brings uniform blasting following to the direction of its slit-shaped openings.



The process (Equipment flow)



Inlet | Airlock | Wet Blasting | Rough Rinse | 2nd. Rinse | 3rd. Rinse | Cutwater | Outlet

Conveyor Type Wet Blast Machine *mini PFE 100*

Main features

Dimensions	1200 (W) × 1250 (D) × 1600 (H) mm	Power supply	AC200V, 50/60Hz, 3 phases
Blast Gun	Wide Gun 110mm×1.0mm One each for top and bottom	Power consumption	Approx. 2.6kW (Total rated apparent power of all the cell)
Work piece	Width : 20-100mm Length : 100-250mm (Max.50-250mm) Thickness : 0.1-1.5mm (Depends on shape)	Air supply pressure	0.5MPa-0.7MPa
Transportation speed	0.3-3.0m/min	Air consumption	6.5m ³ /min (NTP, 110mm gun, at 0.25MPa of preset blast air pressure)
Air pressure	0.1-0.25MPa	Water consumption	5L/min and below

Outline dimensional drawing

