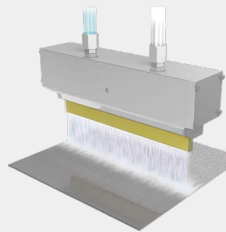


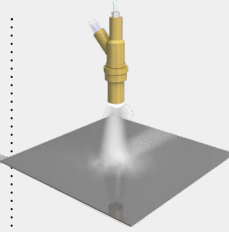
Base Treatment for Adhesion

Comparison of Surface Processing Methods



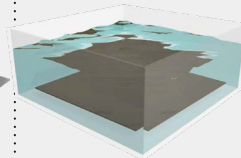
Wet Blasting

Compressed air accelerates the water and abrasive mixture against workpieces to be processed or cleaned.



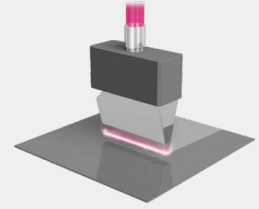
Dry Blasting

Compressed air projects an abrasive against workpieces to process them.



Chemical Etching

Chemically processes workpieces in a chemical solution.



Atmospheric Pressure Plasma

High-energy electrons and ions are applied to generate new substrates and remove dirt.

Low-Pressure Plasma

Method

Uniformity of Treated Surface

A

C

A

B

B

Wettability

(A = Permanent
B = Effective but temporary)

A

C

C

B

B

Presence of Residue

B

C

A

A

A

Fine Processing

A

C

B

B

A

Material Selectivity

(A = Any type
C = Limited)

B

B

C

C

B

Processing Time

A

A

B

B

C

Dust

(A = Does not occur
C = Generates a lot)

B

C

A

A

A

Equipment Cost

B

A

C

B

C

Generation of waste water

(A = Does not occur
C = Generates a lot)

C

A

C

A

A

LEGEND: A Good B Fair C Poor/NG